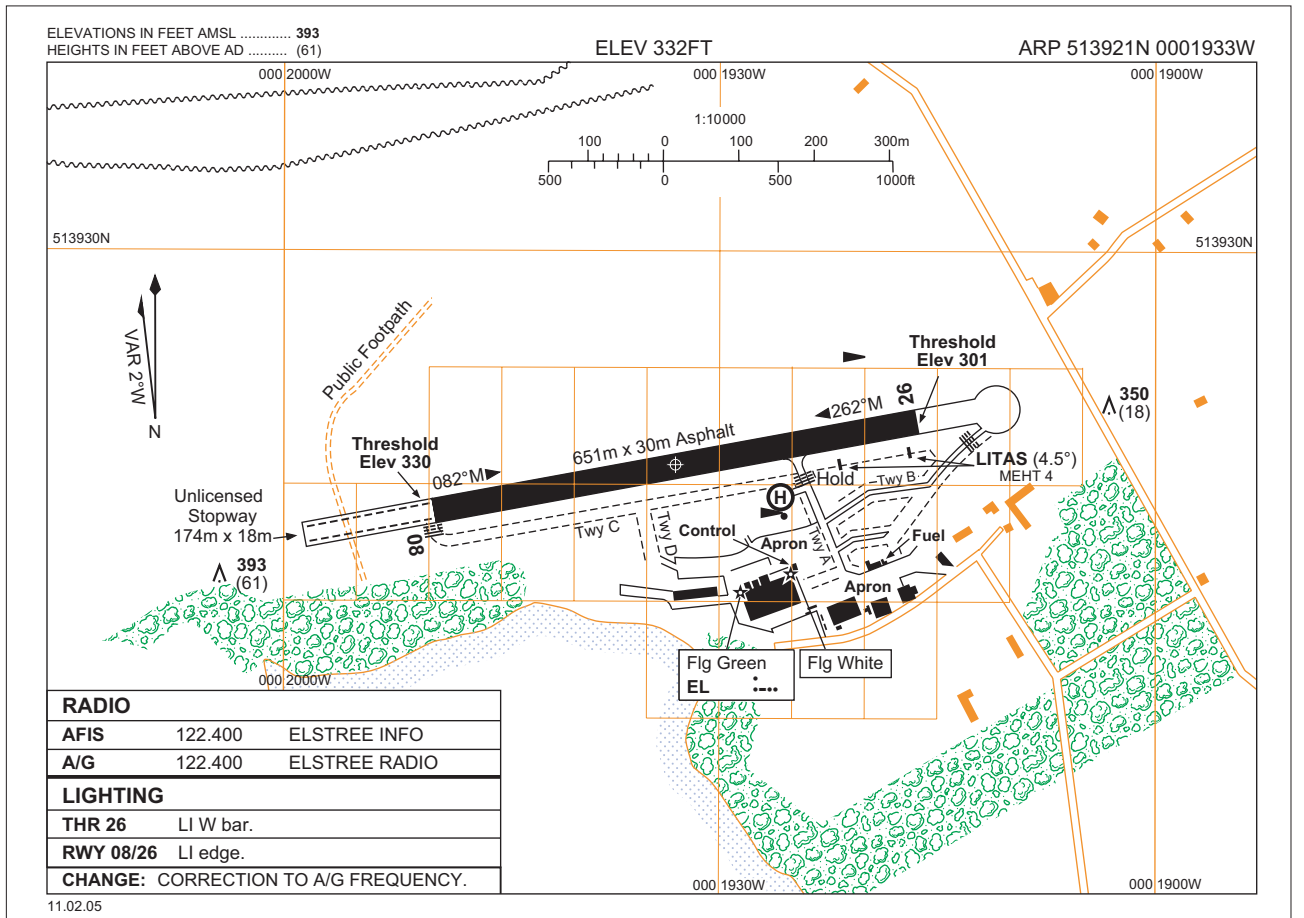


EGTR AD 2.1 **EGTR** **ELSTREE**



EGTR AD 2.2 – AERODROME GEOGRAPHICAL AND ADMINISTRATIVE DATA

2	Direction and distance from city:	2.6 nm E of Watford.
6	AD Administration: Address:	Montclare Shipping Co. Ltd. Elstree Aerodrome, Borehamwood, Hertfordshire, WD6 3AR.
	Telephone:	020-8953 7480.
	Fax:	020-8207 3691.
	Telex:	934537 EGTR.

EGTR AD 2.3 – OPERATIONAL HOURS

1	AD:	Winter: 0900-SS and by arrangement. Summer: 0800-SS and by arrangement.
2	Customs and Immigration:	By arrangement.
7	ATS:	Winter: A/G or AFIS (ATZ) Fri-Mon 0900-SS + 30; Tue-Thu 0900-2100. AFIS Fri-Sun 0800-SS. A/G at all other times. Summer: A/G or AFIS (ATZ) 0800-SS + 30. AFIS Fri-Sun 0800-SS. A/G at all other times.
8	Fuelling:	By arrangement.
12	Remarks:	This aerodrome is PPR. AD not available to aircraft requiring the use of a licensed AD after 1900 hrs or SS if earlier. See also AD 2.20.

EGTR AD 2.4 – HANDLING SERVICES AND FACILITIES

2	Fuel/oil types:	Fuel: AVTUR JET A-1, AVGAS 100LL. Oil: Aero lubs.
----------	------------------------	---

EGTR AD 2.6 – RESCUE AND FIRE FIGHTING SERVICES	
1	AD Category for fire fighting: RFF Category Special, RFF Category 1 by arrangement.

EGTR AD 2.10 – AERODROME OBSTACLES					
In Approach/Take-off areas			In circling area and at aerodrome		
1			2		
Runway/Area affected	Obstacle type Elevation (ft amsl) Markings/lighting	Co-ordinates	Obstacle type Elevation (ft amsl) Markings/lighting	Co-ordinates	
a	b	c	a	b	
08/Approach 26/Take-off	Tree 393	513915.76N 0002004.40W	Building Trees Mast	528 551 705	513828.63N 0002000.25W 513814.42N 0001950.50W 513808.19N 0001955.55W
26/Approach 08/Take-off	Tree Tree Tree 350 376 381	513923.10N 0001903.11W 513923.75N 0001852.61W 513927.46N 0001851.64W			
3	Remarks:	HT cables, 95 ft aal running east-west approximately 0.3 nm north of Runway 08/26. HT cables, running north - south approximately 0.21 nm from the threshold of Runway 08.			

EGTR AD 2.13 – DECLARED DISTANCES					
Runway Designator	TORA (m)	TODA (m)	ASDA (m)	LDA (m)	Remarks
1	2	3	4	5	6
08 26	651 651	651 651	651 651	651 651	Runway 26 stopway is not available for aircraft required to use a licensed aerodrome. 128 m paved area to the east of threshold 26 is not available for take-off or landing. Surface suitable for taxiing by day for aircraft requiring run up/hold at Runway 26 hold point.

EGTR AD 2.17 – ATS AIRSPACE			
Designation and lateral limits		Vertical limits	Airspace Classification
1		2	3
Elstree Aerodrome Traffic Zone (ATZ) Circle radius 2 nm centred on longest notified runway (08/26) 513921N 0001933W.		2000 ft aal SFC	G †
4	ATS unit callsign: Language:	Elstree Radio/Information. English.	
5	Transition Altitude:		
6	Remarks:	† Refer to Section ENR 1.4 for Notifications. See AD 2.3 for ATZ hours.	

EGTR AD 2.20 – LOCAL TRAFFIC REGULATIONS

Aerodrome Regulations

- (a) Terms and conditions of use are available on request from the aerodrome operator.
- (b) Aerodrome not available to aircraft unable to communicate by radio.

Warnings

- (a) Distance between taxiway centre-lines and the nearest obstruction is generally only 10.5 m. Pilots are to taxi with extreme caution.

Use of Runways

- (a) Only Runway 26 is licensed for night use.
- (b) The 18 m wide centre-line section of the surface to the west of threshold 08 is suitable for taxiing.
- (c) Normal operations are confined to the runway between the marked thresholds.

EGTR AD 2.21 – NOISE ABATEMENT PROCEDURES

- (a) Circuits variable in accordance with noise limitation schedule.

EGTR AD 2.22 – FLIGHT PROCEDURES

- (a) Circuits may extend up to 1 nm north of the ATZ.
- (b) Runway 26 – After take-off maintain runway heading until crossing the power cables then turn right about 20° MAG, aiming midway between Bushey on the left and North Bushey on the right. If then routeing to the south, start turning left on reaching the cemetery and follow the open fields around Bushey or, if routeing to the North, continue straight ahead until at least 900 ft QFE.
- (c) Runway 08 – After take-off maintain runway heading for at least 1 nm.
- (d) Helicopter Operations:
 - (i) Helicopters are to arrive and depart from the ATZ via specific entry/exit point. Pilots should check with aerodrome operator prior to flight;
 - (ii) Only Robinson R22s operated by Cabair Group are permitted to carry out circuit training. Circuit height 750 ft QFE or below to the north of aerodrome.
- (e) Visual Reference Points (VRP) are established for use by aerodrome and en-route traffic as follows:
 - (i) **Canal Bend** 513902N 0002537W;
 - (ii) **Golf Course** 514000N 0001256W.

INTENTIONALLY BLANK